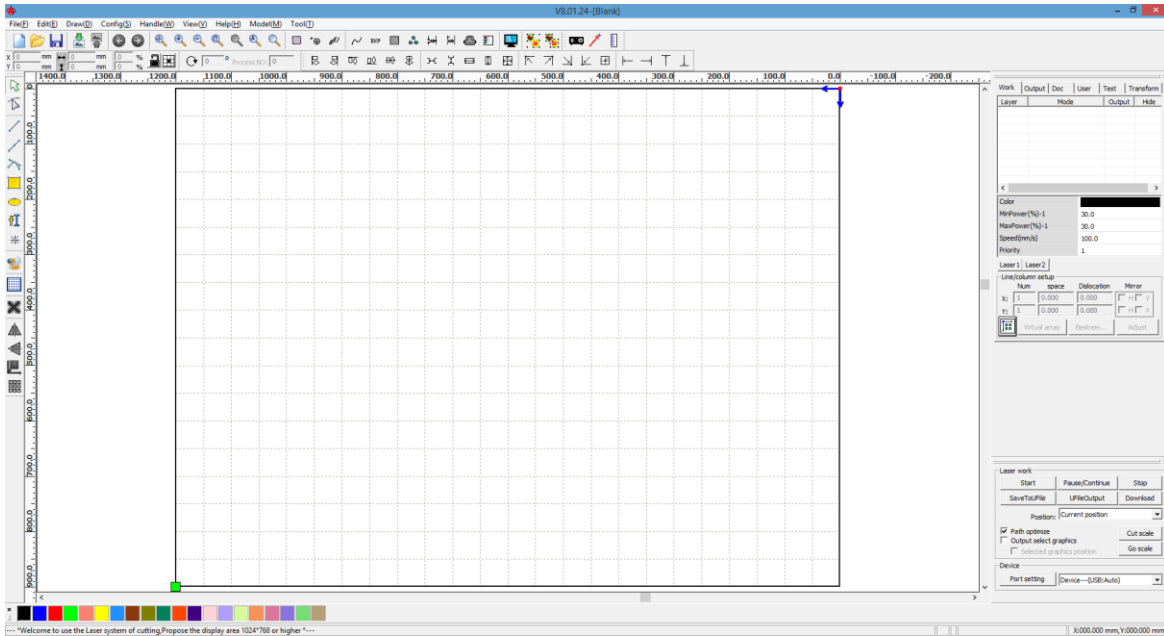
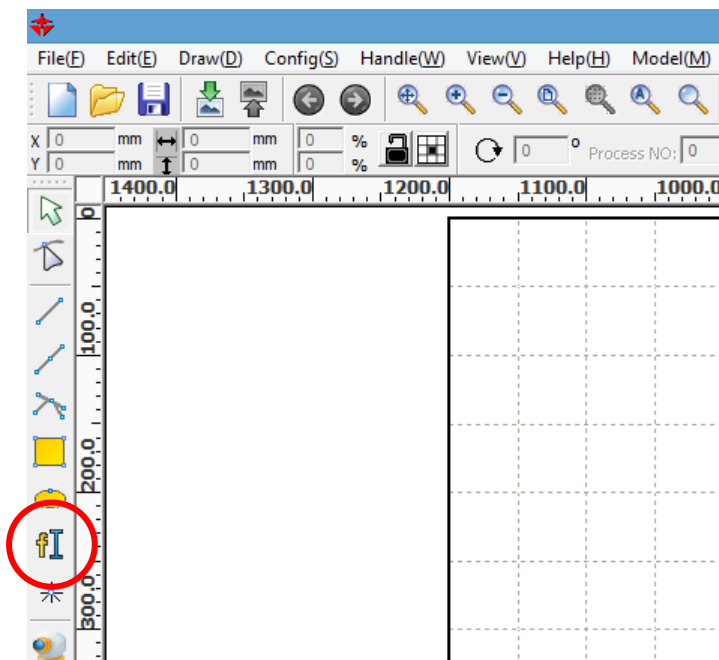


Working with RDWorks to engrave a name into material such as wood. Complete the following steps:

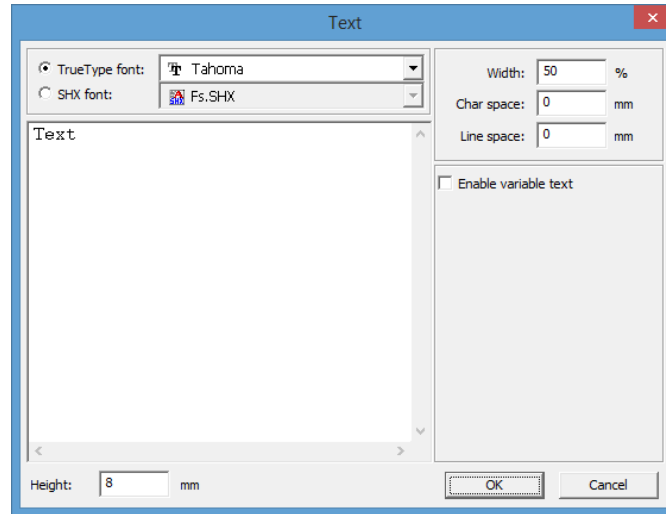
- 1.) Open the RDWorks windows application or use the file menu to start a new project.



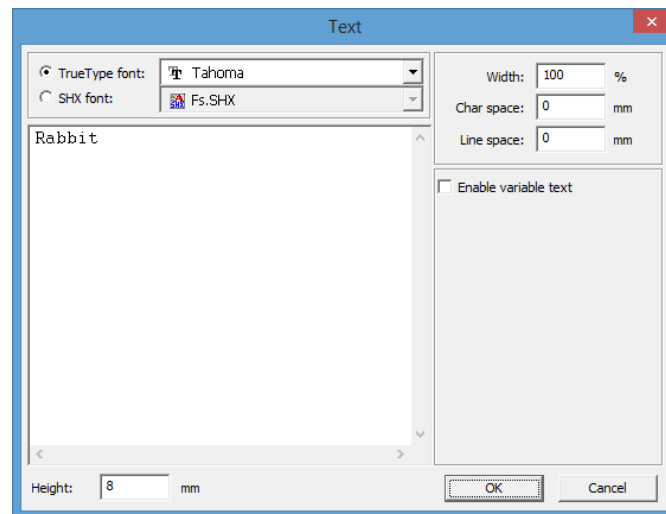
- 2.) Left click the mouse over the image of the text tool.



- 3.) To draw the text on the workspace, click where you want the text to start. RDWorks will automatically show the text editing window.



- 4.) Use the “Text” window to select the appropriate text height (measured in millimeters). The width (measured in a percentage) can be adjusted as desired but the default should be good enough for most purposes. The “Char space” value will give more/less space between characters. The “Line space” will more extra space between lines. RDWorks can use any True Type Font that is installed on the Windows operating system. Type the desired character string into the text area. Special fonts will produce images that correspond to the font character mapping.

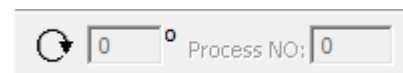


- 5.) Select the “OK” button and the text is placed in the drawing area. The text can be moved, rotated, or stretched. You may want to mirror the text if you are engraving on the back of a mirror, glass, or clear acrylic.

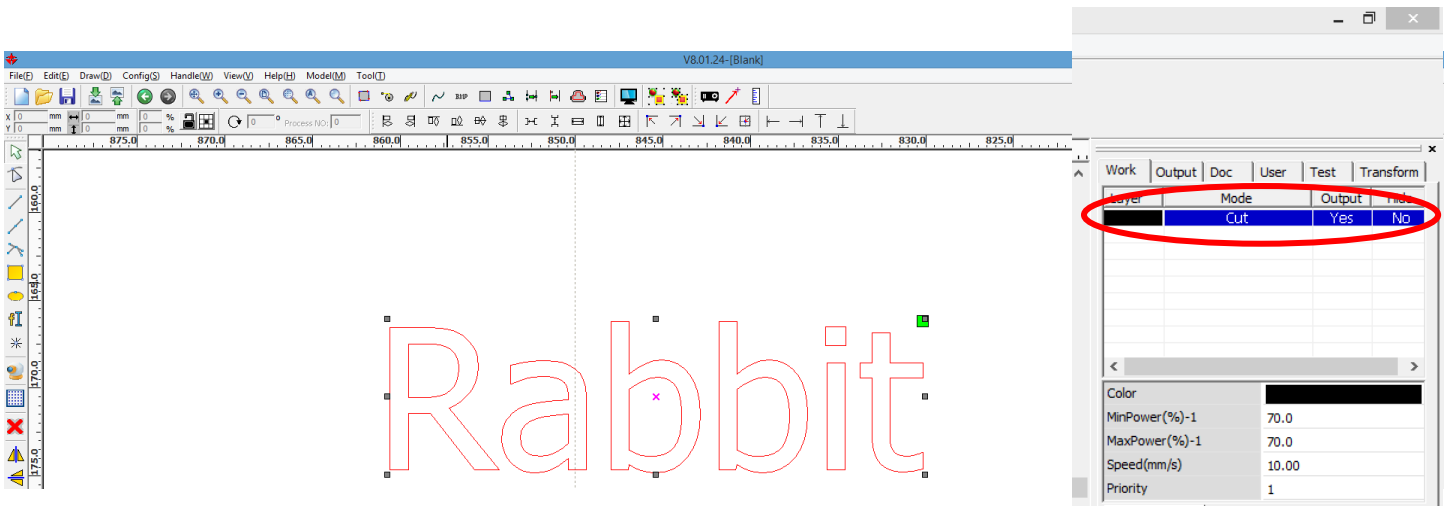


Mirror Horizontal

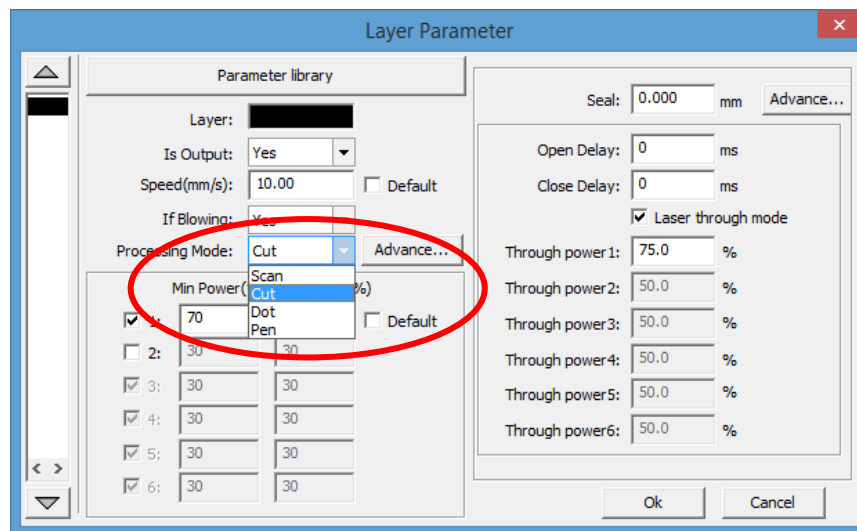
Mirror Vertical



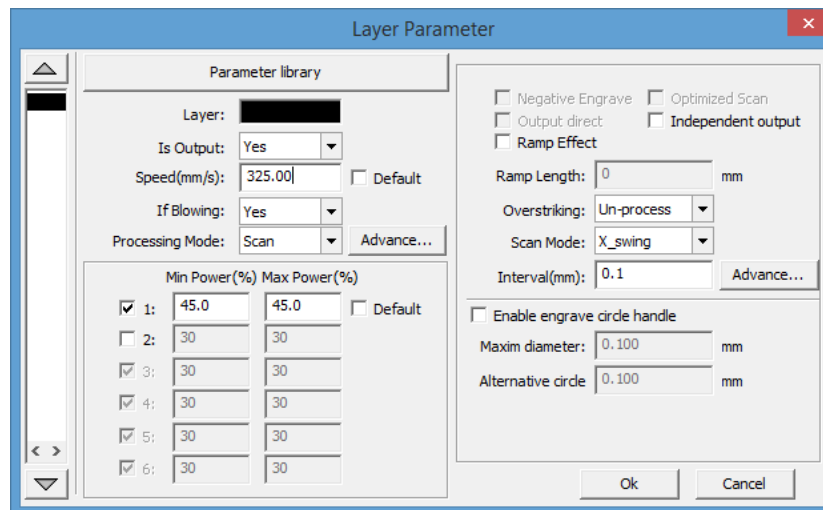
Rotate tool



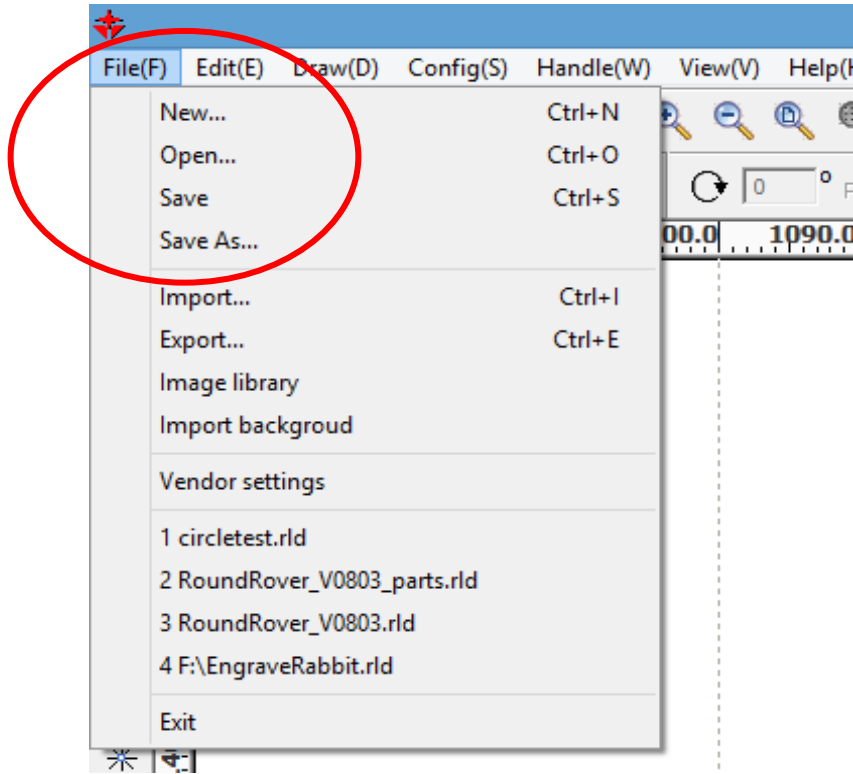
6.) Click the mouse in the white area, away from the text to deselect the text. Notice that the text is a black outline. Double-Click on the layer color to adjust the speed, power, and mode.



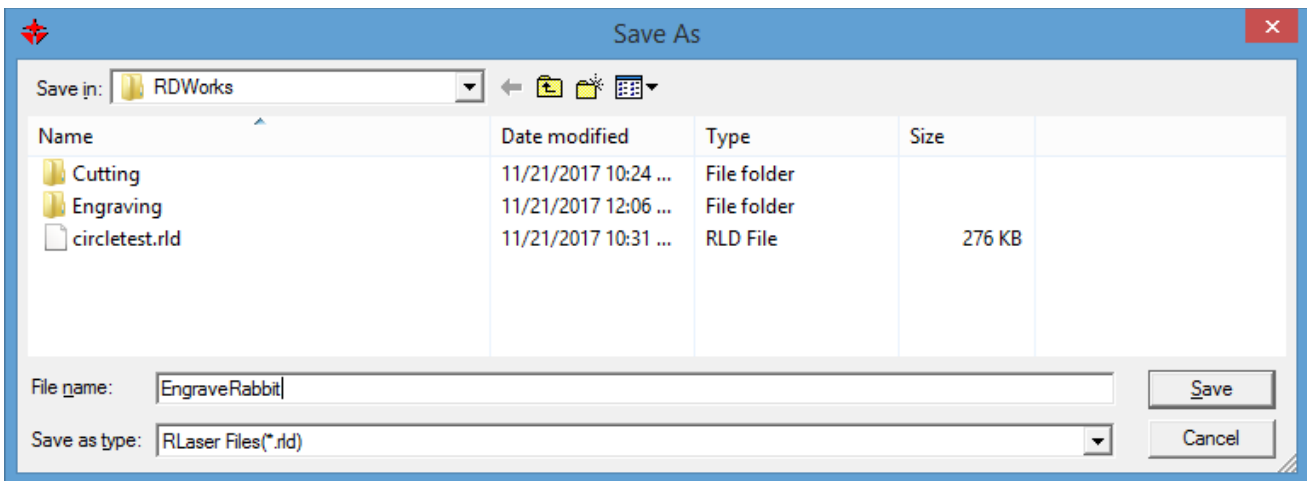
7.) The “Layer Parameter” window will appear. The current mode is set as “Cut”, this needs to be changed to “Scan” with the drop-down menu.



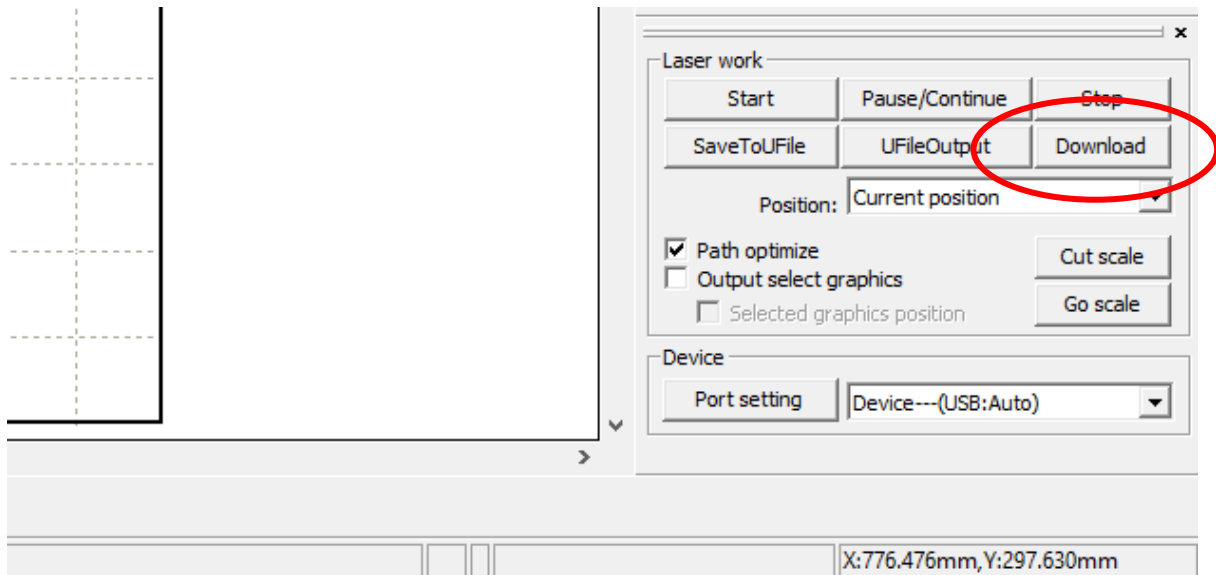
8.) Please refer to our “Common Settings for Cutting and Engraving Materials” data sheet for help finding the appropriate settings. In this example the “Speed” was set to “325”, and the “Min Power” and “Max Power” were set to “45”. Click “Ok” when done.



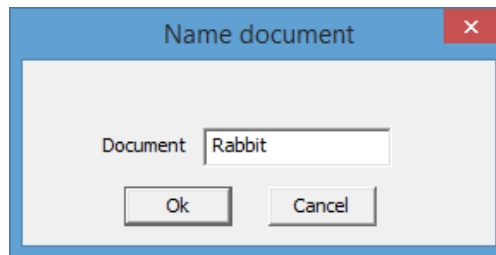
9.) The project has been modified and needs to be saved. To save the project to the computer, go to menu item “File(F)... Save As...”, then put the name of the file.



This file has been saved with the name “EngraveRabbit.rld”. The *.rld file extension is for the RDWorks program and does not denote any other software file format.



- 10.) The text is drawn. The laser settings are modified. The design project has been saved to a file. The next step is to “Download” the design into the laser machine. Make sure that the computer is connected to the laser machine by USB cable and that the laser machine is turned on. (The computer should already have the device drivers installed.) The “Download” command button will start a new connection to the laser machine for transferring the project to the laser machine. The “Name document” window will appear, asking you to name the project that is being loaded into the laser machine. The project name is limited to using only letters and numbers, with a maximum of eight characters.



- 11.) The laser machine should be ready to cut... Please remember to check focus and proper cutting material space.